

October 1, 2003



To Whom It May Concern

Name of Company: LEOC JAPAN Co., Ltd.
Name of Representative: Hiroshi Onodera,
Representative Director
and President
(Registered Issue : Code 2366)
Contact Person: Shinichi Kubouchi,
Corporate Officer and
Strategic Planning Office
Manager
Phone: 03-5774-7050

Notice of Business Reorganization

LEOC JAPAN Co., Ltd. wishes to announce that on October 1, 2003 it reorganized the catering services provided by its subsidiaries as shown below.

Details

I. Overview of Business Reorganization

LEOC JAPAN Co., Ltd. was established on August 1, 2003 as a holding company to manage the subsidiaries that provide catering services to hospitals/welfare facilities and offices/schools. Given the inefficiencies that confronted these subsidiaries, which often provided similar services in the same sales territory, we decided to reorganize them along regional and functional lines into six regional operating companies, with a head office in each region and two functional operating companies.

We adopted the corporate spin-off method for the reorganization, and divided by region and type of business the operating sites of the subsidiaries before the reorganization (such as Sodexho Japan Co., Ltd. and Zenshoku Co., Ltd.). An operating company (established by changing the trade name of the subsidiary before the reorganization or by amalgamation, new incorporation or spin-off) that controls the territory of the operating sites will inherit the business.

(Example : Captain Cook Co., Ltd. ("LEOC Tokyo" after the reorganization) will take over the operating sites of Sodexho Japan Co., Ltd. ("LEOC North Japan" after the reorganization) in Tokyo area through a corporate spin-off. Conversely, Sodexho Japan Co., Ltd., will take over the operating sites of Captain Cook in the North Japan area through a corporate spin-off.)

(New Subsidiaries after reorganization)	(Former Subsidiaries)
LEOC North Japan Co., Ltd. (Sapporo City)	Sodexho Japan Co., Ltd.
LEOC Kanto Co., Ltd. (Saitama City)	Zenshoku Co., Ltd.
LEOC Tokyo Co., Ltd. (Shibuya ward, Tokyo)	Captain Cook Co., Ltd.
LEOC South Kanto Co., Ltd. (Yokohama City)	Chukyo Sodex Co., Ltd.
LEOC Kansai Co., Ltd. (Osaka City)	(Newly established by amalgamation)
LEOC West Japan Co., Ltd. (Fukuoka City)	(Newly established by amalgamation)
LEOC Service Co., Ltd. (Shibuya ward, Tokyo)	Yurakuken Co., Ltd.
LEOC Foods Co., Ltd. (Shibuya ward, Tokyo)	Kanto Preparation Center Co., Ltd.

(NOTES) LEOC Service Co., Ltd. manages dormitories and directly-operated restaurants. LEOC Foods Co., Ltd. is a food materials distribution company.

II . Overview of Subsidiaries after Reorganization (As of October 1, 2003)

1. LEOC North Japan Co., Ltd.

- (1) Trade name LEOC North Japan Co., Ltd.
- (2) Representative Hideaki Seto
- (3) Head office Sapporo City, Hokkaido
- (4) Date of incorporation April 1983
- (5) Main business Catering services as trustee in the North Japan area
(Hokkaido and Tohoku areas)
- (6) Closing month March
- (7) Number of employees 2,350 (including temporary employees)
- (8) Capital stock 290 million yen
- (9) Sales 10.1 billion yen (approximate full-year sales calculated based on the business plan)
- (10) Large shareholder and equity share owned LEOC JAPAN Co., Ltd. (100%)
- (11) Officers (Full-time)

New post	Old post	Name
Representative Director and President	Executive managing officer in Sodexho Japan Co., Ltd. North Japan Branch Office Manager	Hideaki Seto
Corporate Officer, Administration Division General Manager and Personnel and General Affairs General Manager	Personnel Division Deputy General Manager of Sodexho Japan Co., Ltd.	Katsuyuki Yanase

(NOTE) In addition to the above officers LEOC JAPAN Co., Ltd. dispatches employees as part-time directors or statutory auditors of this company.

2. LEOC Kanto Co., Ltd.

- (1)Trade name LEOC Kanto Co., Ltd.
 (2) Representative Masafumi Sasaki
 (3) Head office Saitama City, Saitama
 (4)Date of incorporation September 1969
 (5)Main business Catering services as trustee in the Kanto area
 (Ibaraki, Tochigi, Gunma, Saitama, Chiba and Shinetsu areas)
 (6) Closing month March
 (7)Number of employees 1,430 (including temporary employees)
 (8)Capitalstock 65 million yen
 (9)Sales 5.5 billion yen (approximate full-year sales calculated based on the business plan)
 (10) Large shareholder and equity share owned LEOC JAPAN Co., Ltd. (100%)
 (11)Officers (Full-time)

New post	Old post	Name
Representative Director and President	Corporate officer in Sodexho Japan Co., Ltd. General manager (No. 2 Operation Division) in East Japan Branch Office	Masafumi Sasaki

(NOTE) In addition to the above officer, LEOC JAPAN Co., Ltd. dispatches employees as part-time directors or statutory auditors of this company..

3. LEOC Tokyo Co., Ltd.

- (1)Trade name LEOC Tokyo Co., Ltd.
 (2) Representative Atsushi Yoshiura
 (3) Head office Shibuya ward, Tokyo
 (4)Date of incorporation June 1989
 (5)Main business Catering services as trustee in Tokyo
 (6)Closing month March
 (7)Number of employees 1,930
 (8)Capitalstock 1,385 million yen
 (9)Sales 9.3 billion yen (approximate full-year sales calculated based on the business plan)
 (10) Large shareholder and equity share owned LEOC JAPAN Co., Ltd. (100%)
 (11)Officers (Full-time)

New post	Old post	Name
Representative Director and President	Corporate officer in Sodexho Japan Co., Ltd.	Atsushi Yoshiura

	General manager (No. 1 Operation Division) in East Japan Branch Office	
Managing director responsible for marketing in the Operational Division	Executive managing officer in Zenshoku Co., Ltd.	Kazuhiro Imamura
Director and Guidance Division General Manager	Corporate officer in Sodexho Japan Co., Ltd. Deputy branch manager in East Japan Branch Office	Tamotsu Fujiwara
Corporate Officer and Administration Division General Manager	General manager (General Affairs Division) in Sodexho Japan Co., Ltd.	Yuji Seki

(NOTE) In addition to the above officers, LEOC JAPAN Co., Ltd. dispatches employees as part-time directors or statutory auditors of this company.

4. LEOC South Kanto Co., Ltd.

- (1) Trade name LEOC South Kanto Co., Ltd.
- (2) Representative Yoshikuni Hasegawa
- (3) Head office Yokohama City, Kanagawa Prefecture
- (4) Date of incorporation April 1996
- (5) Main business Catering services as trustee in the South Kanto area
(Kanagawa, Yamanashi, Shizuoka, and Tokyo (part) areas)
- (6) Closing month March
- (7) Number of employees 1,130
- (8) Capital stock 167 million yen
- (9) Sales 4.6 billion yen (approximate full-year sales calculated based on the business plan)
- (10) Large shareholder and equity share owned LEOC JAPAN Co., Ltd. (100%)
- (11) Officers (Full-time)

New post	Old post	Name
Representative Director and President	Sodexho Japan Co., Ltd. General manager (No. 3 Operation Division) in East Japan Branch Office	Yoshikuni Hasegawa

(NOTE) In addition to the above officer, LEOC JAPAN Co., Ltd. dispatches employees as part-time directors or statutory auditors of this company.

5. LEOC Kansai Co., Ltd.

- (1)Trade name LEOC Kansai Co., Ltd.
(2) Representative Naoichi Nishida
(3) Head office Osaka City, Osaka Prefecture
(4)Date of incorporation October 2003
(5)Main business Catering services as trustee in the Kansai area
(Hokuriku and Kansai areas, and Gifu, Aichi, and Mie)
(6)Closing month March
(7)Number of employees 1,860
(8)Capital 301 million yen
(9)Sales 6.4 billion yen (approximate full-year sales calculated based on the business plan)
(10) Large shareholder and equity share owned LEOC JAPAN Co., Ltd. (100%)
(11)Officers (Full-time employment)

New post	Old post	Name
Representative Director and President	Executive managing officer in Sodexho Japan Co., Ltd. Kansai Branch Office manager	Naoichi Nishida
Director and Operating Division General Manager	Sodexho Japan Co., Ltd. East Japan Branch Office General manager in the Administrative Division	Kazumi Takatsuki
Corporate Officer, and Administration Division General Manager	Sodexho Japan Co., Ltd. Kansai Branch Office General manager in the Administrative Division	Kenji Yonetsu

(NOTE) In addition to the above officers, LEOC JAPAN Co., Ltd. dispatches employees as part-time directors or statutory auditors of this company.

6. LEOC West Japan Co., Ltd.

- (1)Trade name LEOC West Japan Co., Ltd.
(2) Representative Takeyoshi Yanagihara
(3) Head office Fukuoka City, Fukuoka Prefecture
(4)Date of incorporation October 2003
(5)Main business Catering services as trustee in the West Japan area
(Chugoku, Shikoku, Kyushu, and Okinawa areas)
(6)Closing month March
(7)Number of employees 430
(8)Capitalstock 59 million yen

(9) Sales 6.7 billion yen (approximate full-year sales calculated based on the business plan)

(10) Large shareholder and equity share owned LEOC JAPAN Co., Ltd. (100%)

(11) Officers

New post	Old post	Name
Representative Director and President	Executive managing officer in Sodexho Japan Co., Ltd. West Japan Branch Office manager	Takeyoshi Yanagihara

(NOTE) In addition to the above officer, LEOC JAPAN Co., Ltd. dispatches employees as part-time directors or statutory auditors of this company.

7. LEOC Service Co., Ltd.

(1) Trade name LEOC Service Co., Ltd.

(2) Representative Makoto Kawagoe

(3) Head office Shibuya ward, Tokyo

(4) Date of incorporation June 1965

(5) Main business Management and operation of dormitories and company-operated restaurants.

(6) Closing month March

(7) Number of employees 570

(8) Capital stock 73 million yen

(9) Sales 2.9 billion yen (approximate full-year sales calculated based on the business plan)

(10) Large shareholder and equity share owned LEOC JAPAN Co., Ltd. (100%)

(11) Officers

New post	Old post	Name
Representative Director and President	Executive managing officer in Sodexho Japan Co., Ltd. General manager (personnel Division)	Makoto Kawagoe
Director and Operation Division General Manager	Sodexho Japan Co., Ltd. General manager responsible for prestige in the New Business Development Division	Yoshihisa Enomoto

(NOTE) In addition to the above officers, LEOC JAPAN Co., Ltd. dispatches employees as part-time directors or statutory auditors of this company.

8. LEOC Foods Co., Ltd.

- (1) Trade name LEOC Foods Co., Ltd.
- (2) Representative Hideo Amekawa
- (3) Head office Shibuya ward, Tokyo
- (4) Date of incorporation August 1981
- (5) Main business Procurement and distribution of food materials for the LEOC JAPAN group
- (6) Closing month March
- (7) Number of employees 23
- (8) Capital stock 10 million yen
- (9) Large shareholder and equity share owned LEOC JAPAN Co., Ltd. (100%)
- (10) Officers (Full-time)

New post	Old post	Name
Representative Director and President	Executive managing officer in Sodexho Japan Co., Ltd. General manager (Marketing Procurement Development Division)	Hideo Amekawa

(NOTE) In addition to the above officer, LEOC JAPAN Co., Ltd. dispatches employees as part-time directors or statutory auditors of this company..

III . Future Outlook

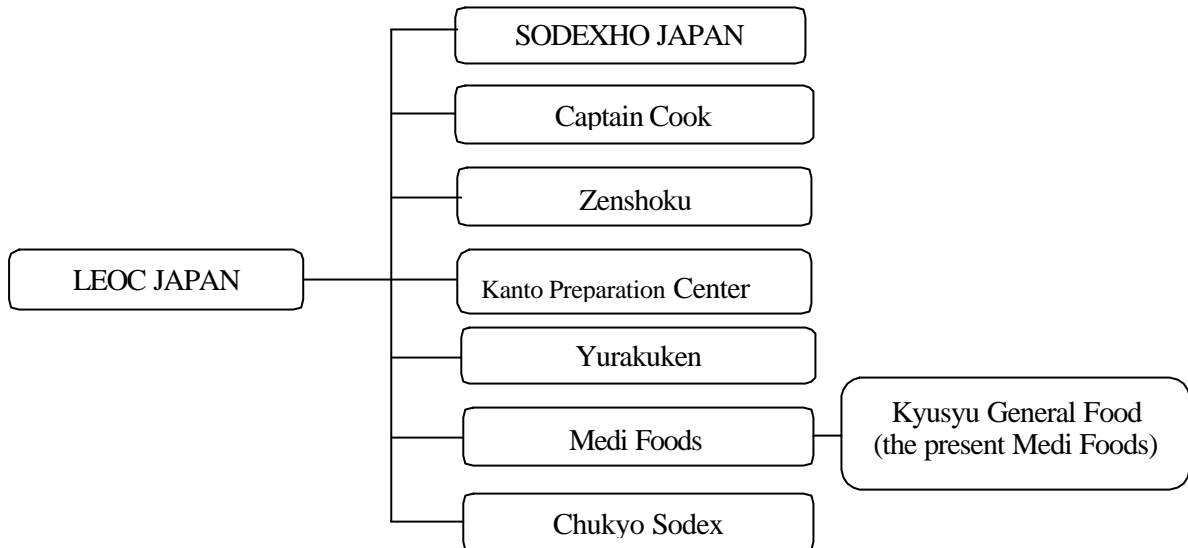
The purpose of these changes is to reorganize the businesses of wholly-owned subsidiaries of the Company along regional and functional lines and therefore there will be no changes in the outlook for consolidated results.

* APPENDICES

1. Organization System of Group Companies

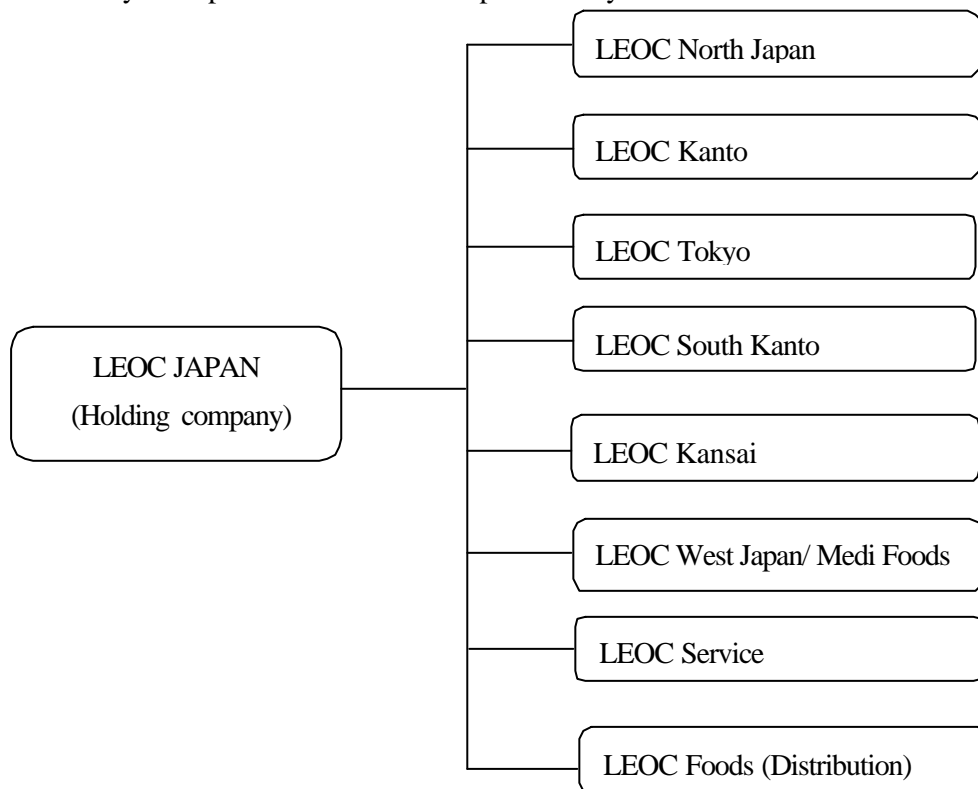
Before reorganization (As of September 30, 2003)

Each subsidiary of LEOC JAPAN Co., Ltd. provides catering services in its respective area.



After reorganization (October 1, 2003)

Subsidiaries of LEOC JAPAN Co., Ltd. were reorganized along regional and functional lines and each subsidiary will operate its business to respond closely to local customer needs.



- Medi Foods is to be reorganized after the next year.
- LEOC Service manages and operates dormitories and company-operated restaurants.